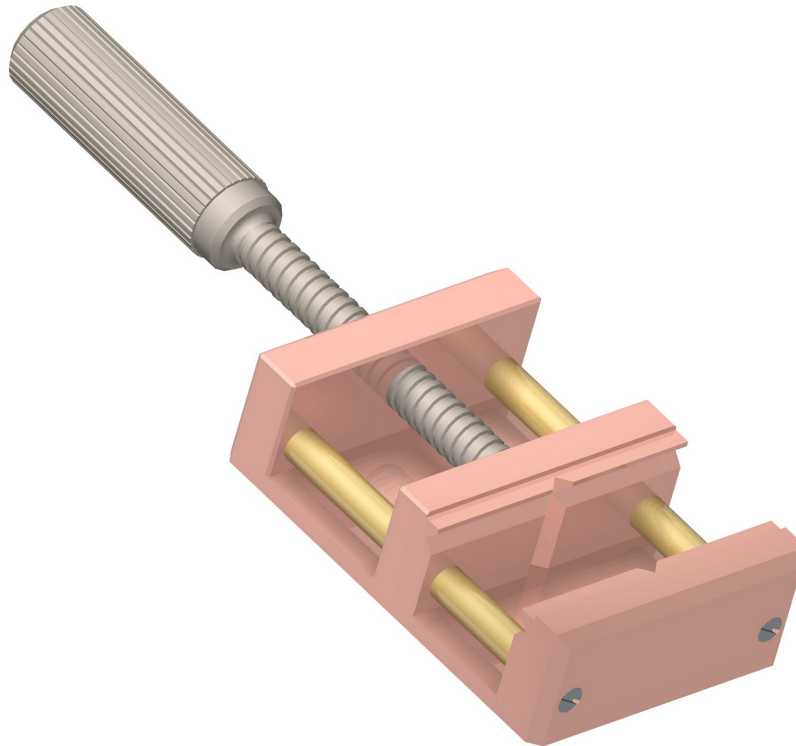


Drill Vice



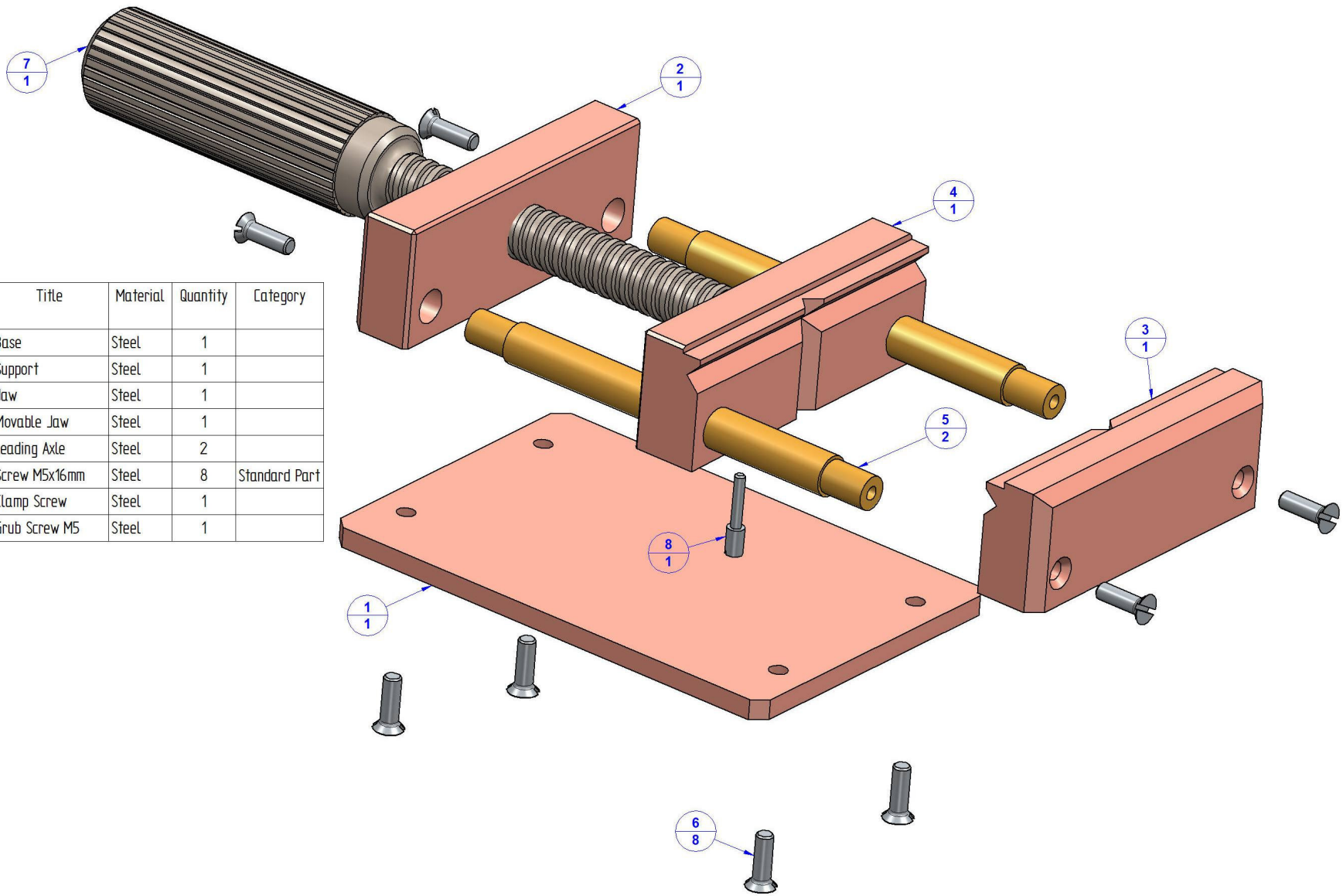
Make precise items by the measurements given on particular 2D drawings. The measurements are given in millimeters, and the measurements in inches are given in brackets (1 inch = 25,4 mm).

The Jaw (item 3), the Movable Jaw (item 4) and the Clamp Screw (item 7) have to be tempered in order to harden them and besides that, these three items have to be made out of the quality steel of a high hardness.

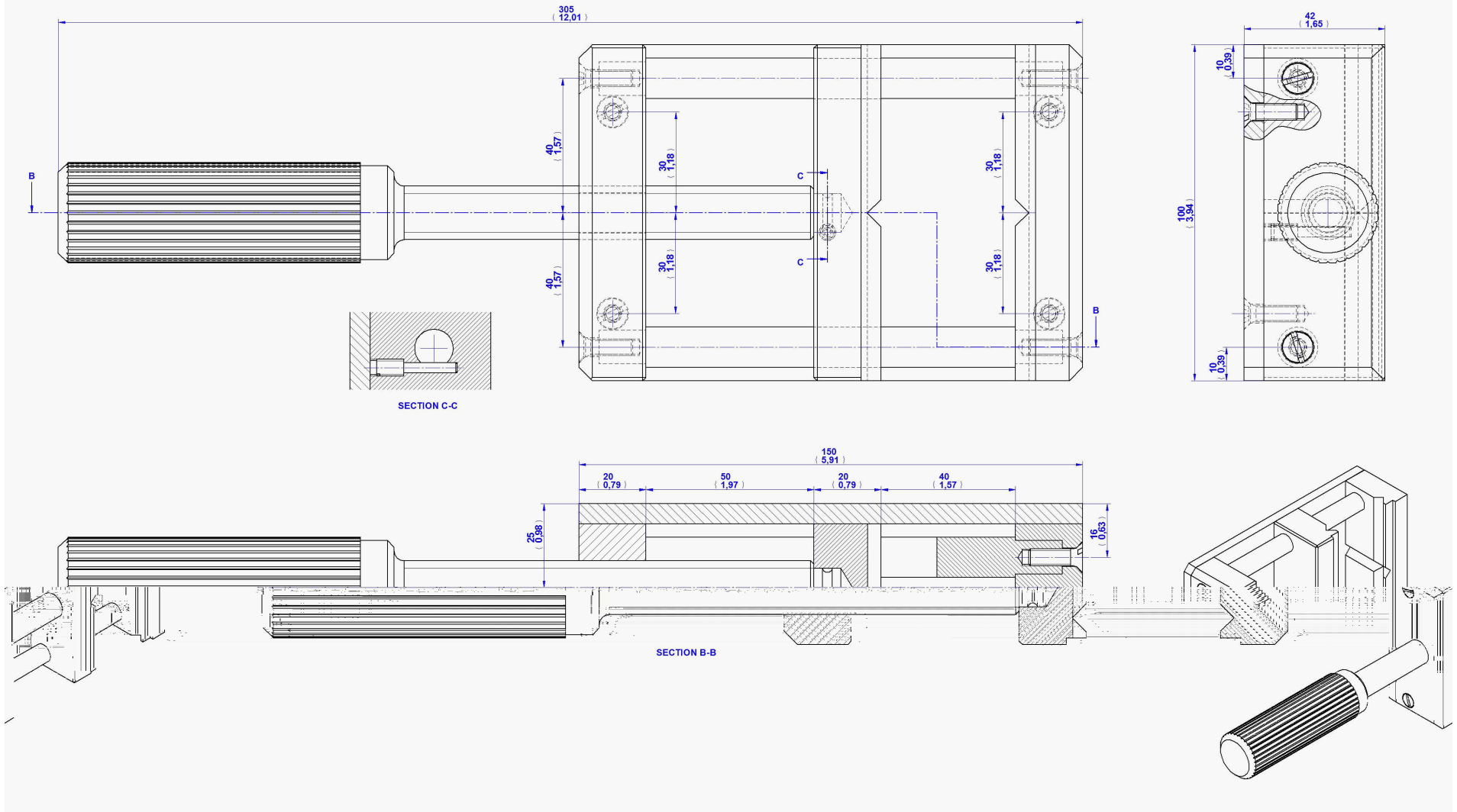
Do not forget to chamfer the edges on items 1, 2, 3, 4 and 7. This way you will avoid injuries that can happen while working with its very sharp edges. This should become a rule when you work with metal items, which are made by cutting, milling or turning.

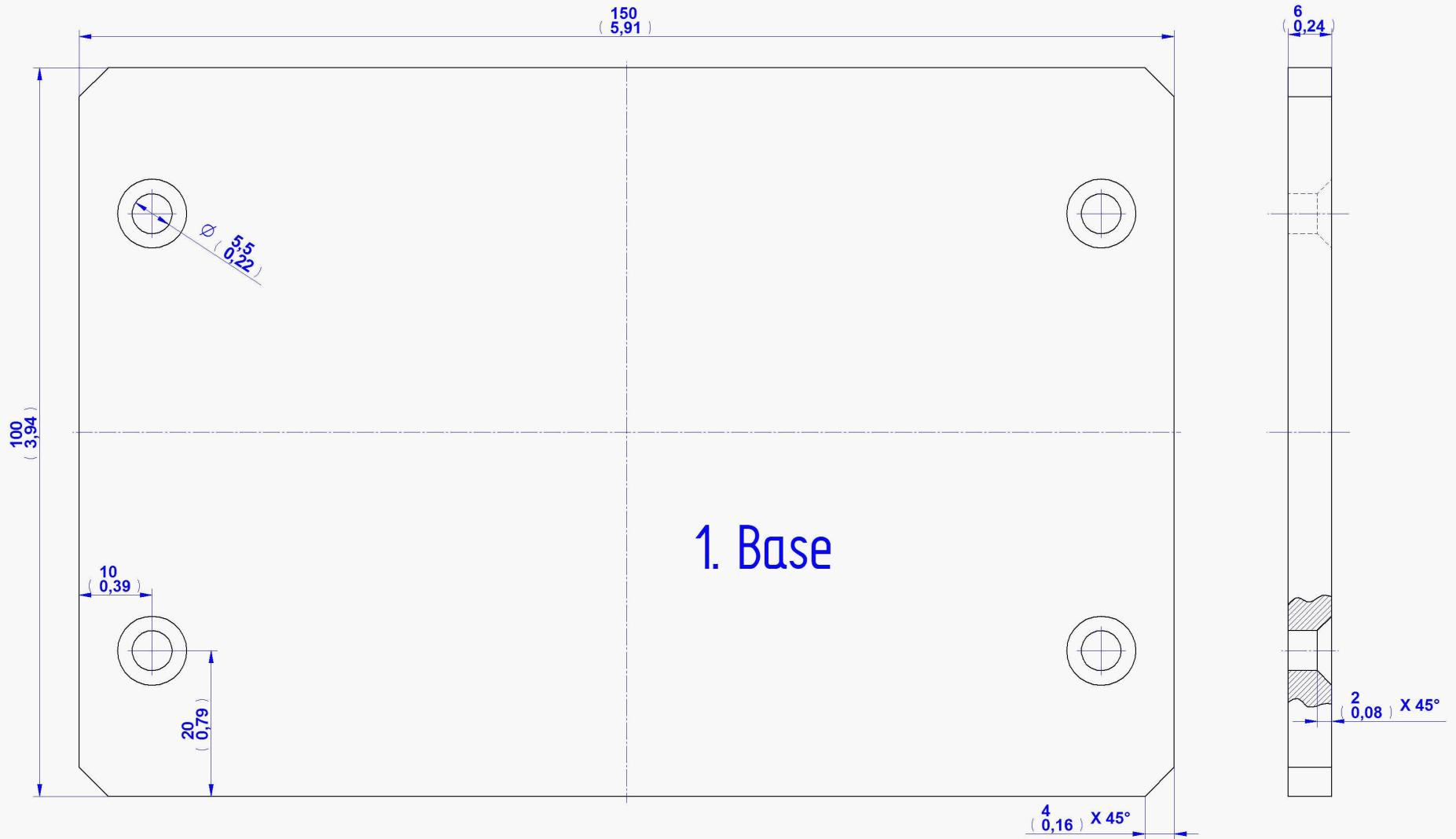
Parts List

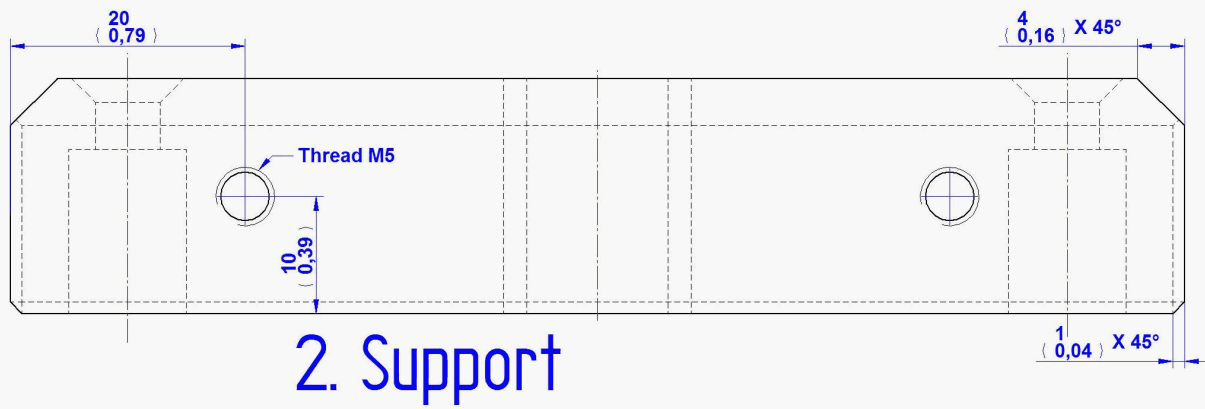
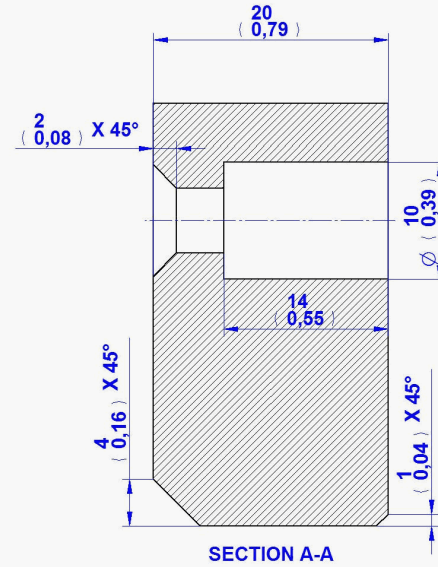
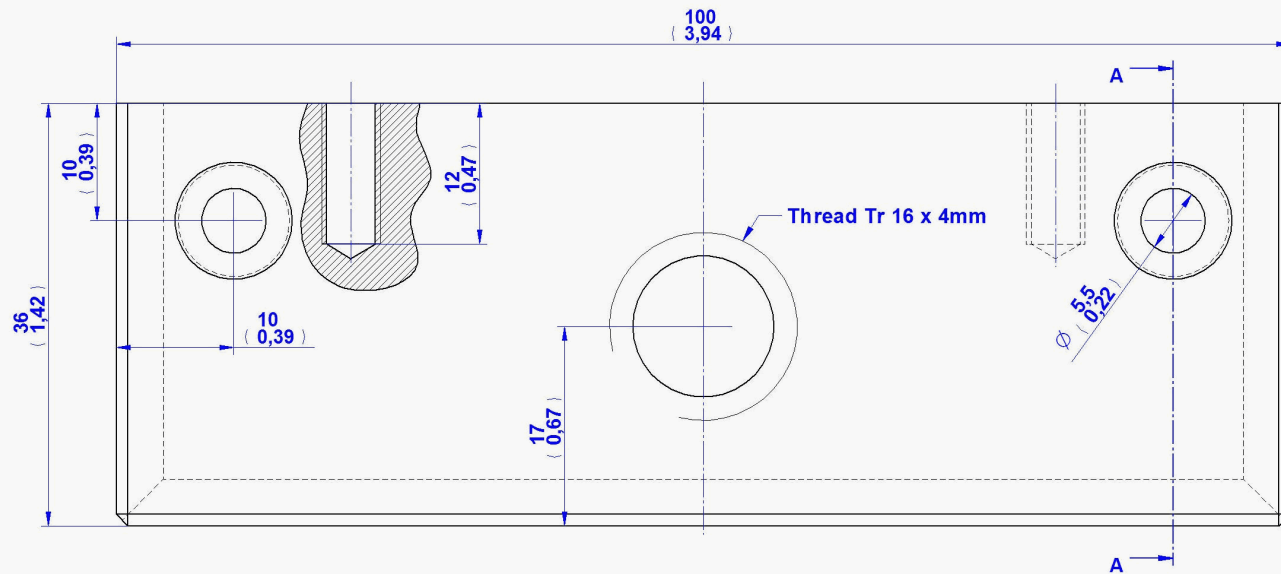
Item Number	Title	Material	Quantity	Category
1	Base	Steel	1	
2	Support	Steel	1	
3	Jaw	Steel	1	
4	Movable Jaw	Steel	1	
5	Leading Axle	Steel	2	
6	Screw M5x16mm	Steel	8	Standard Part
7	Clamp Screw	Steel	1	
8	Grub Screw M5	Steel	1	



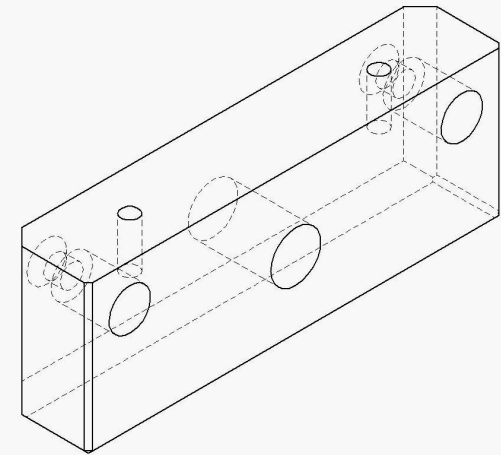
Assembly Drawing

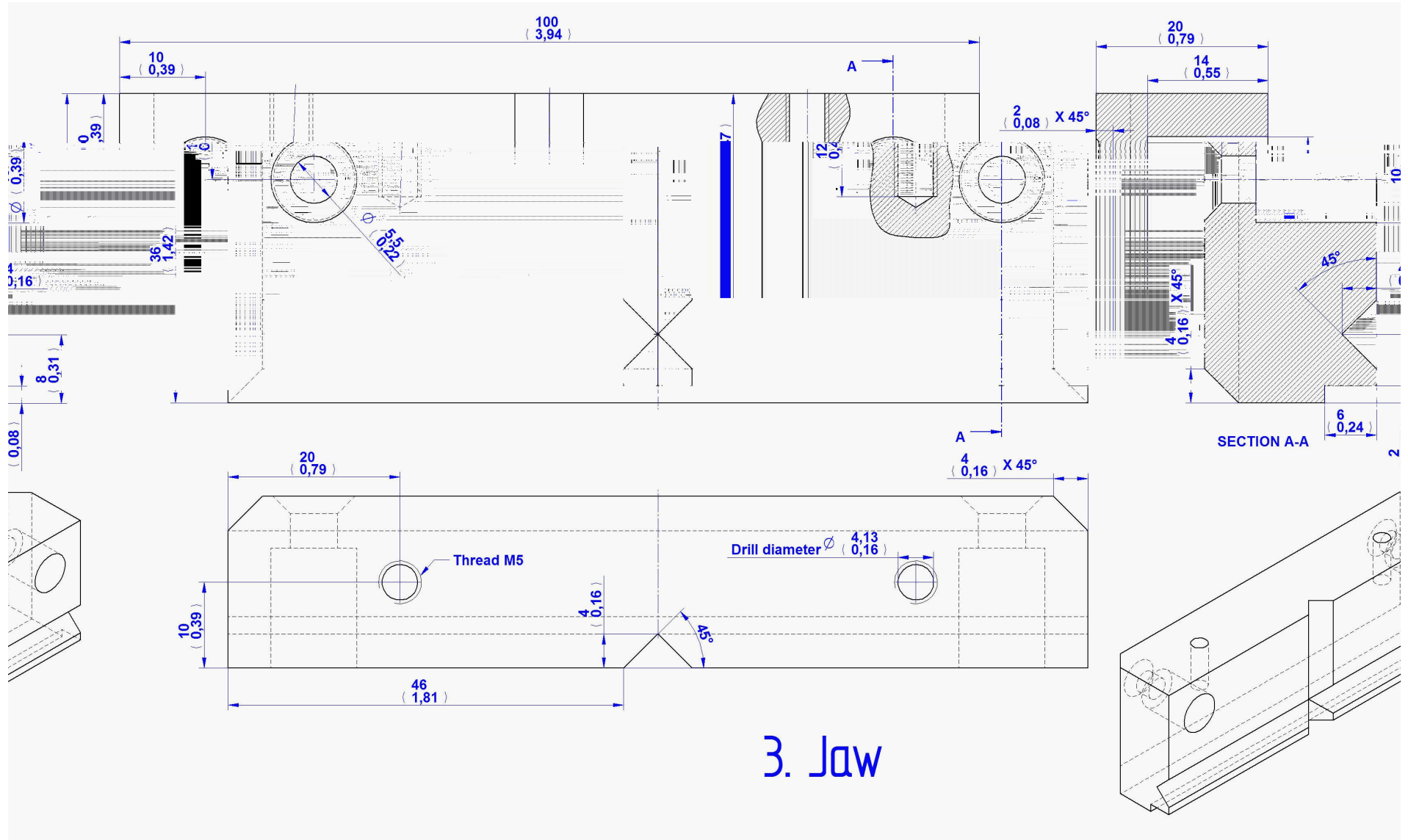


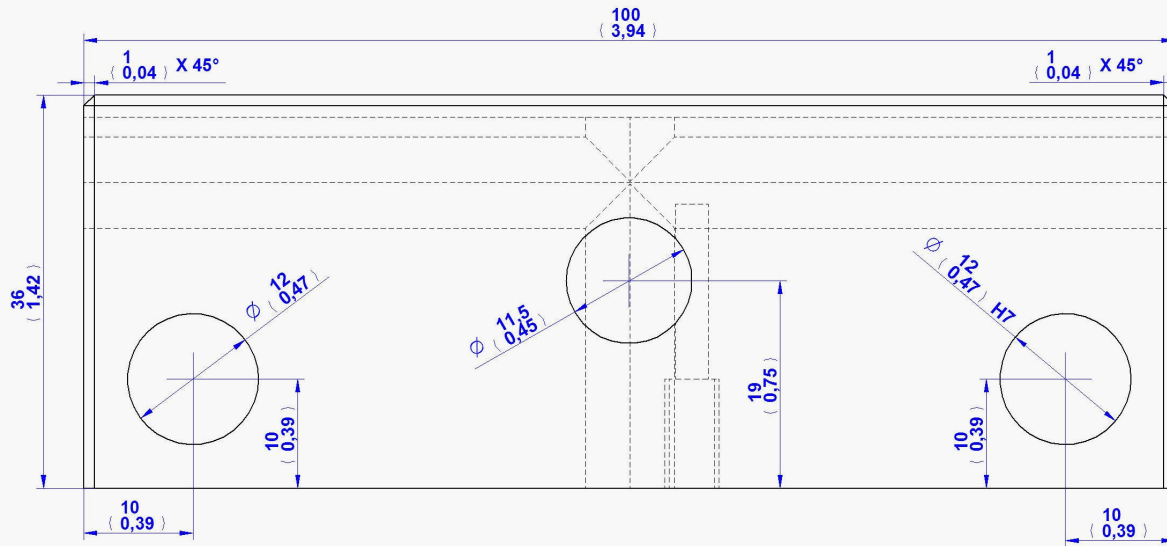
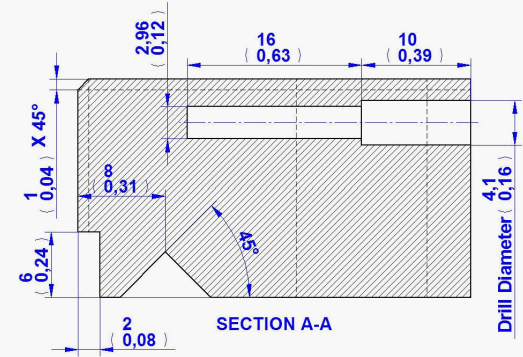
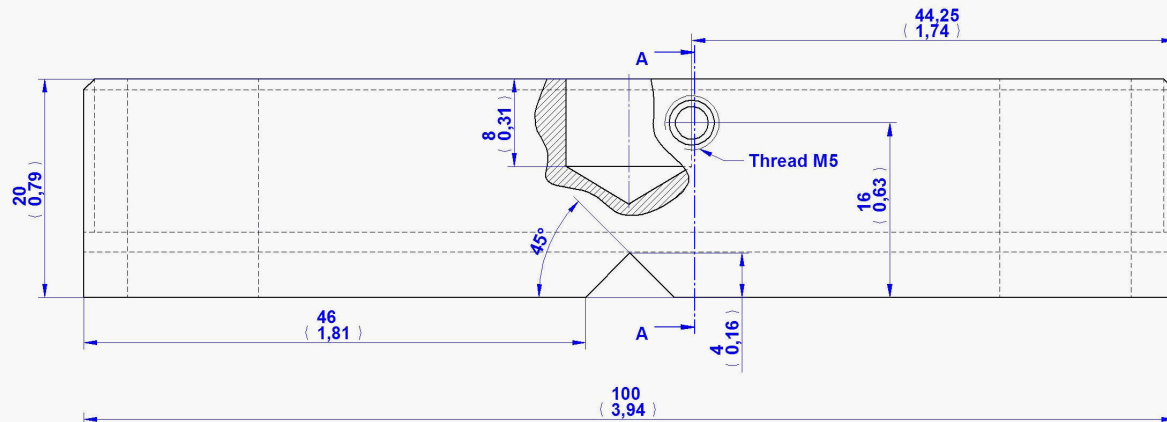




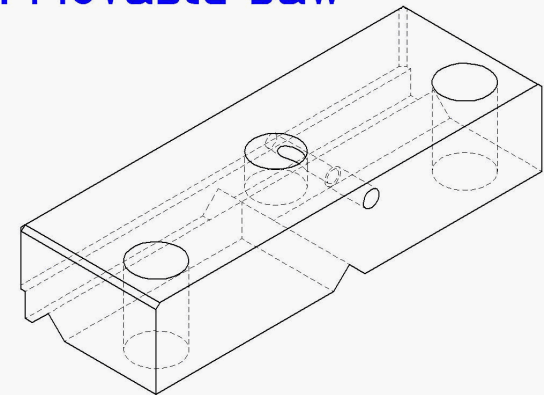
2. Support

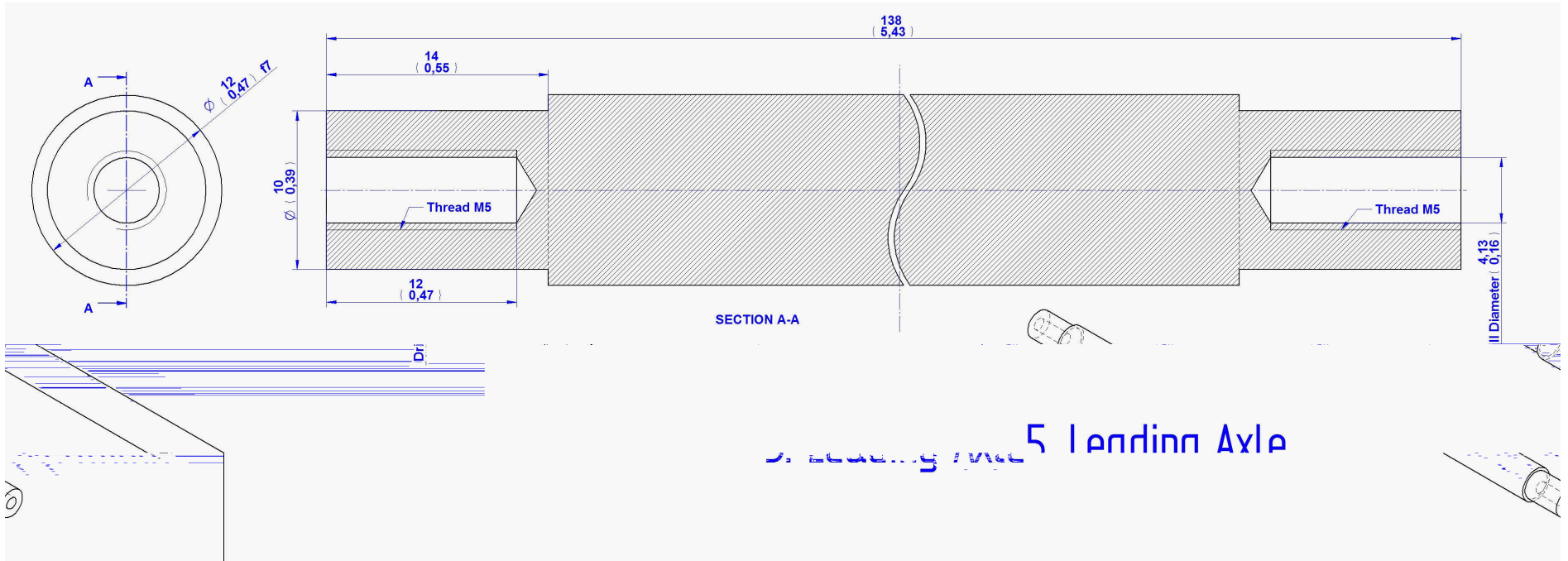


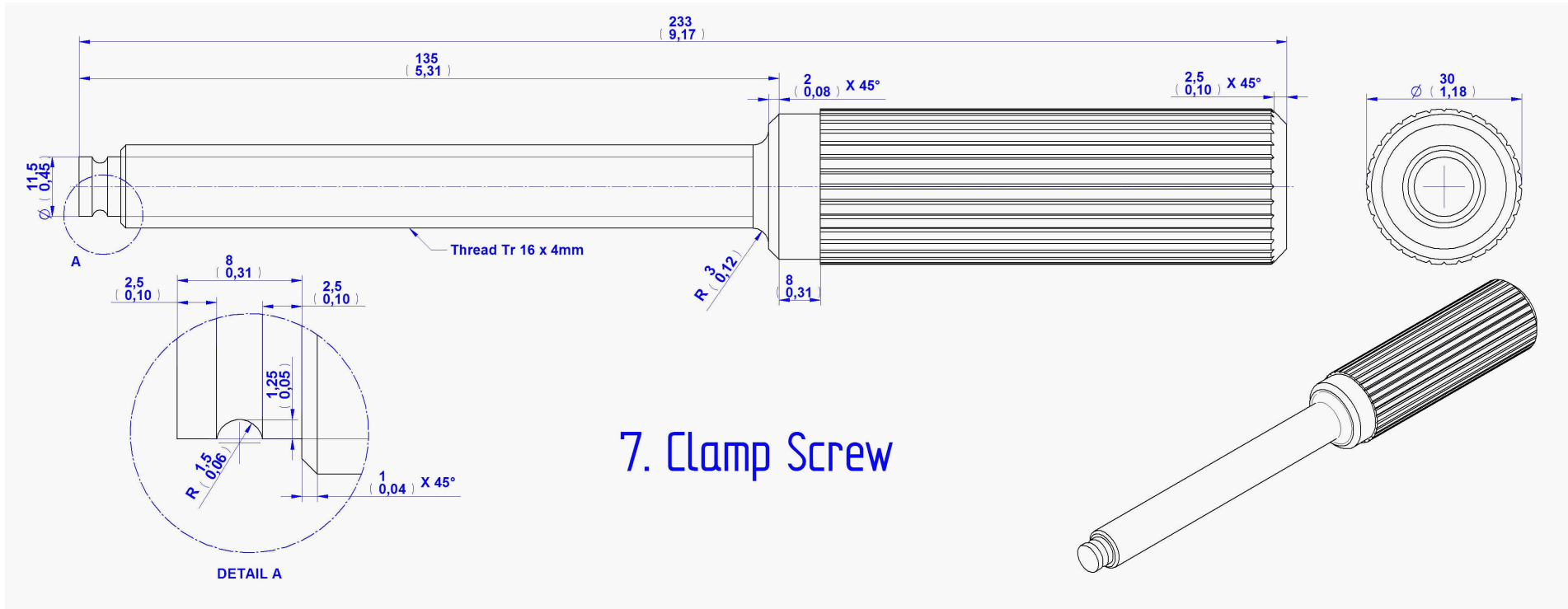




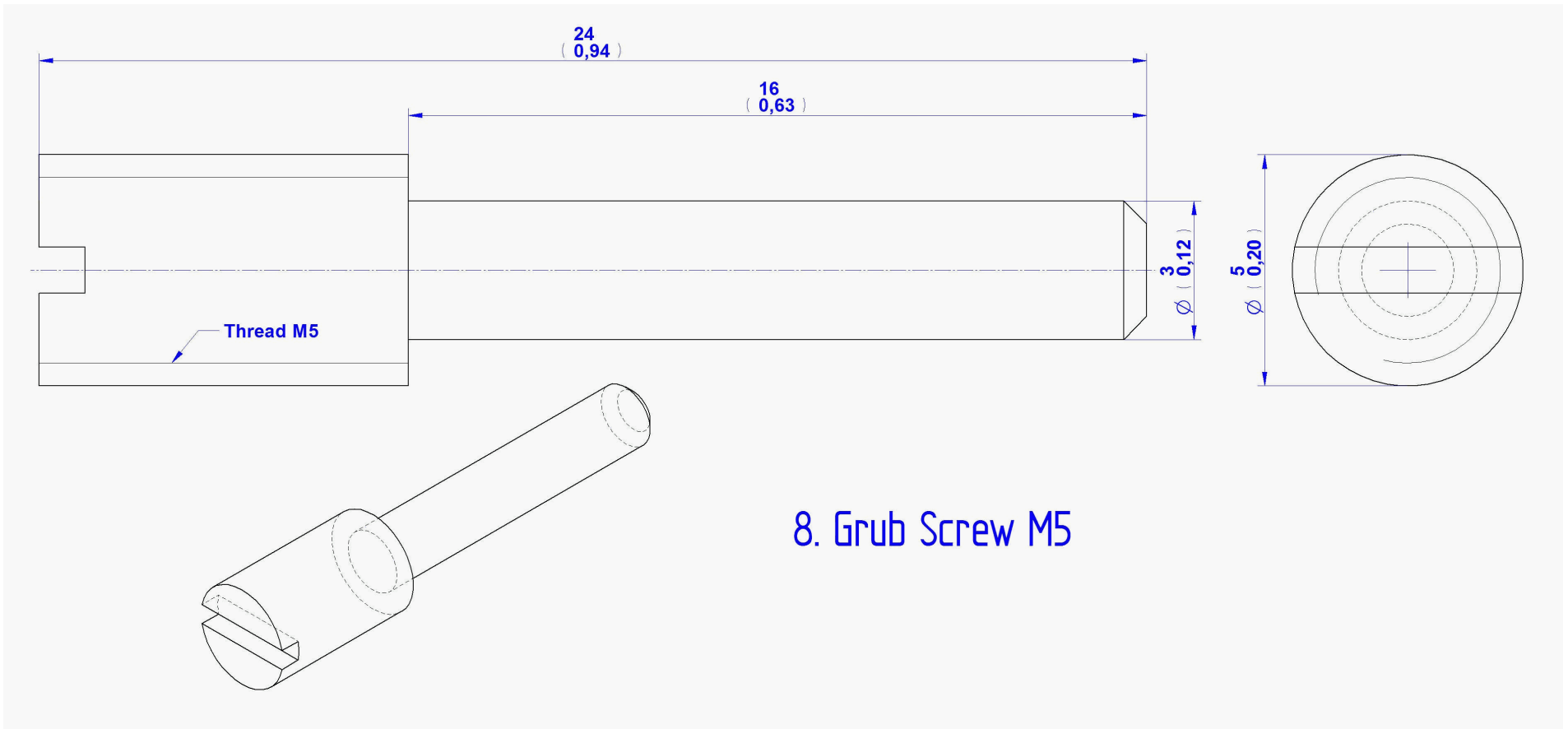
4. Movable Jaw



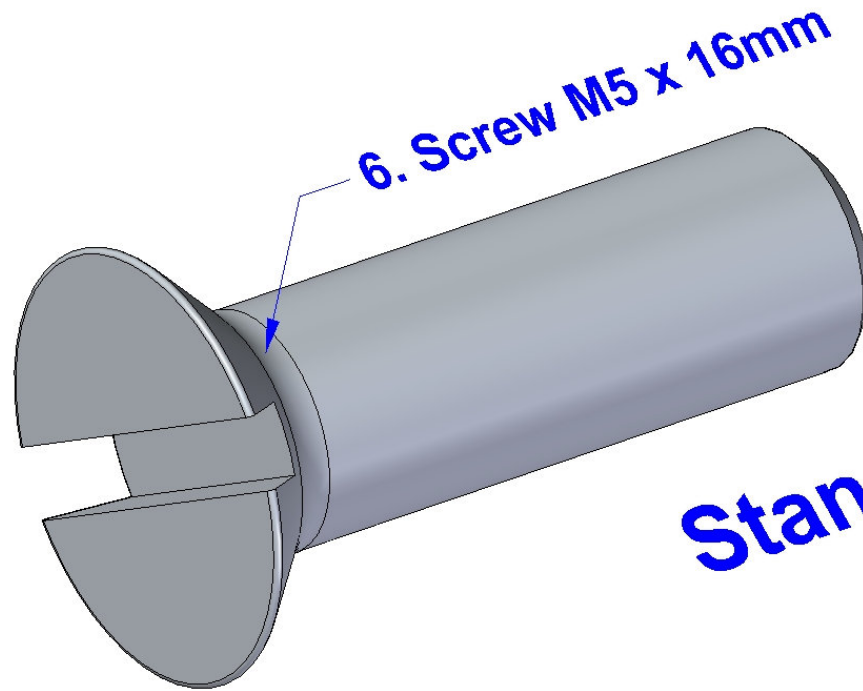




7. Clamp Screw



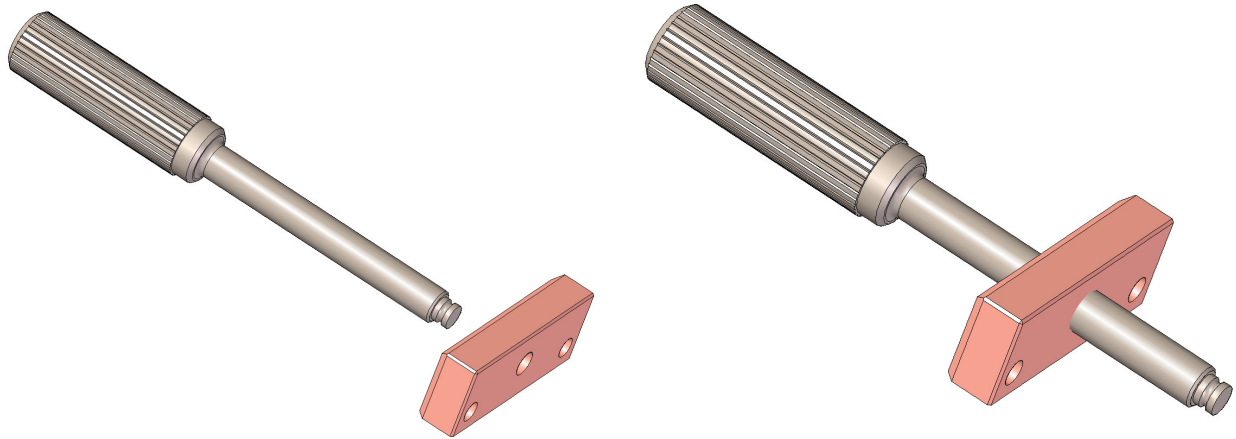
Standard Part



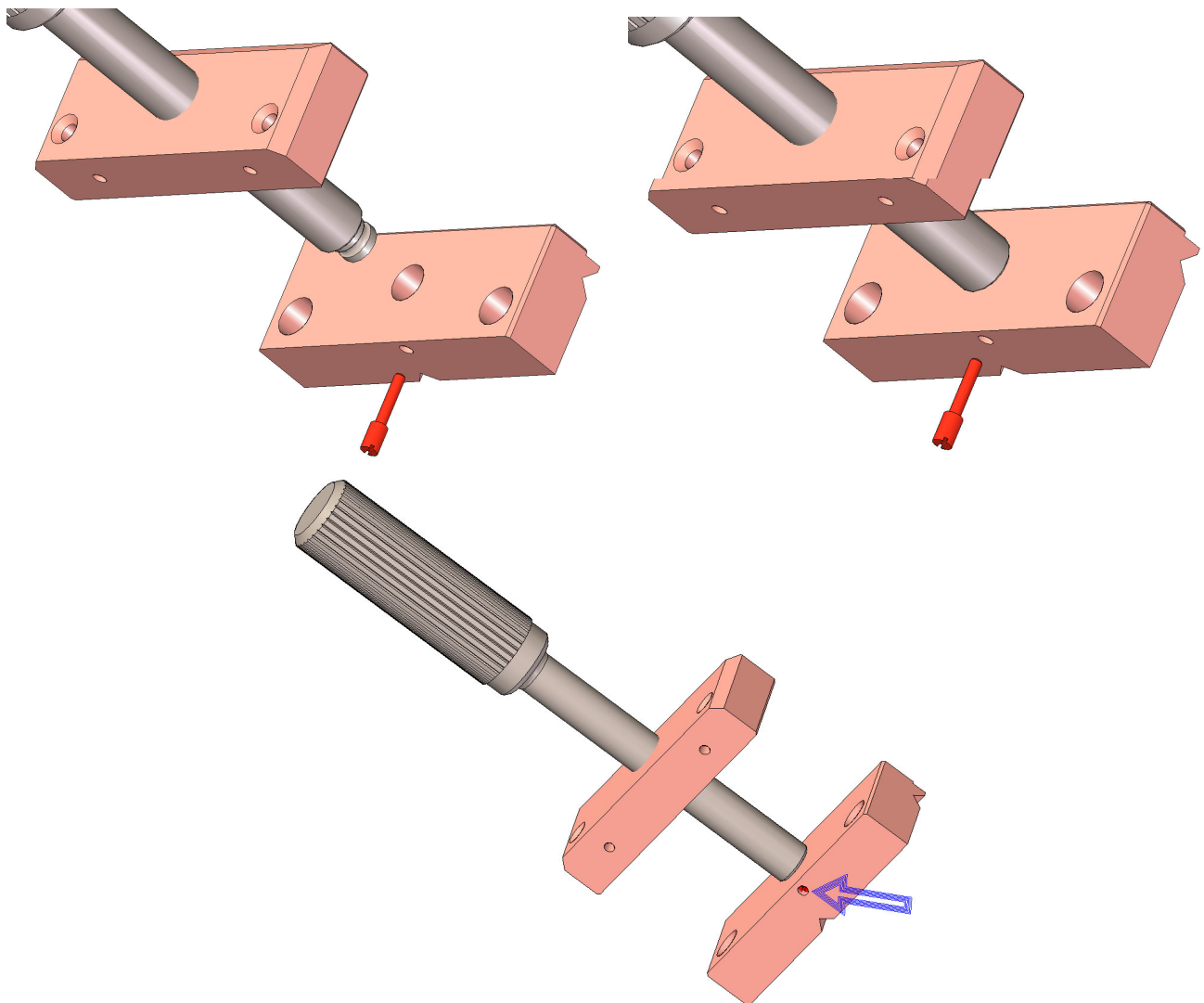
Standard Part

Assemblage Instructions

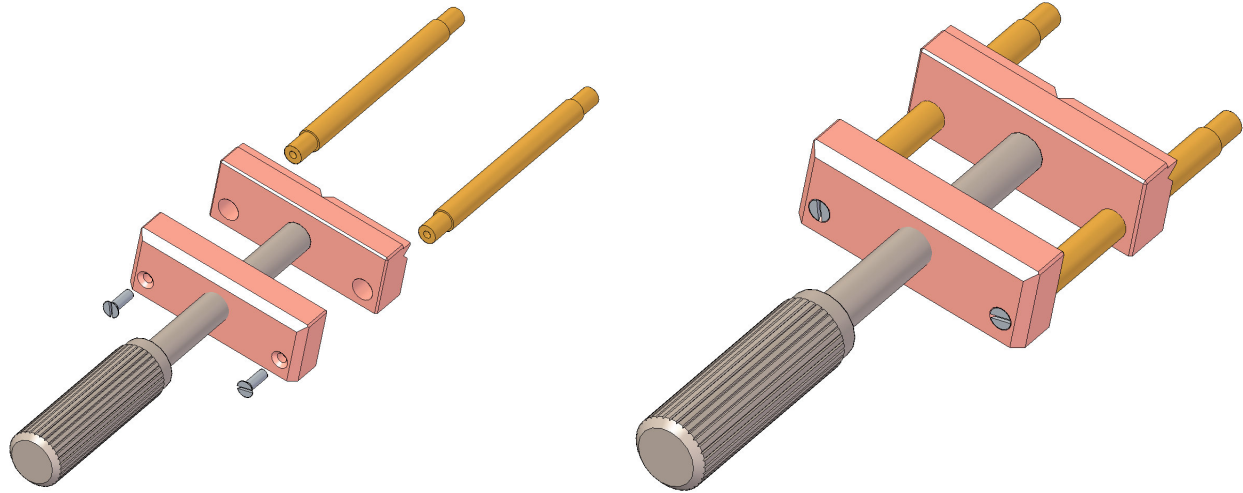
1. Screw the Clamp Screw (item 7) in the Support (item 2)



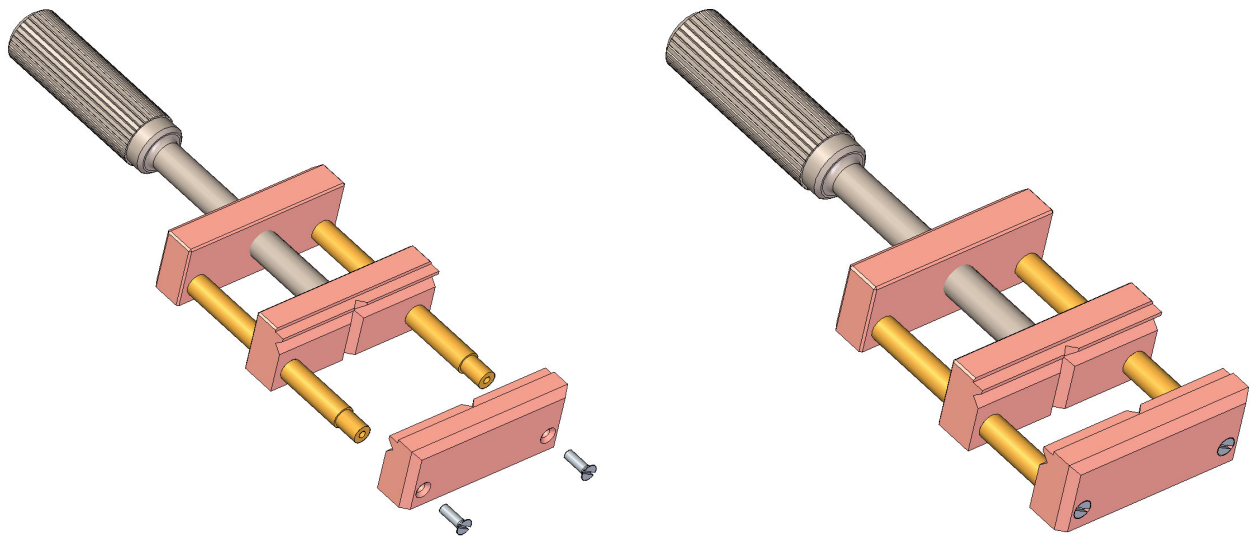
2. Fasten the Movable Jaw (item 4) to the subassembly made in the previous step with Grub Screw M5 (item 8).



3. Fasten the Leading Axle (item 5) to the subassembly made in the previous step with Screws M5x16mm (item 6).



4. Fasten the Jaw (item 3) to the subassembly made in the previous step with Screws M5x16mm (item 6).



5. Fasten the Base (item 1) to the subassembly made in the previous step with Screws M5x16mm (item 6).

